

ULTIMATE VERSATILITY



Loads Like A FlatBed Protects Like A Van. Delivers Like A Utility.

The Utility Tautliner® is the only trailer on the road that is designed, engineered, and manufactured by one company from the ground up. We ensure the quality of each element of our Tautliner®, from the platform to the superstructure and even the curtains themselves. You can get our Tautliners in a variety of different sizes - including our Tautliner® Truck Body - to suit the needs of your company. And like all our trailers, you can customize the Tautliner® to meet your exact specifications.



High Strength-to-Weight Ratio Platform

The Tautliner® platform features one of the highest strength-to-weight ratios in the industry. With high-strength front corners, steel rear bumpers, and durable crossmember attachments, no other curtainsider provides the durability, strength, and quality of the Utility Tautliner.

Superior Cargo Protection Just Like A Van

Close the curtains, and close the door on weather penetration. Virtually weather proof, the Utility Tautliner® provides all the protection of a dry van.

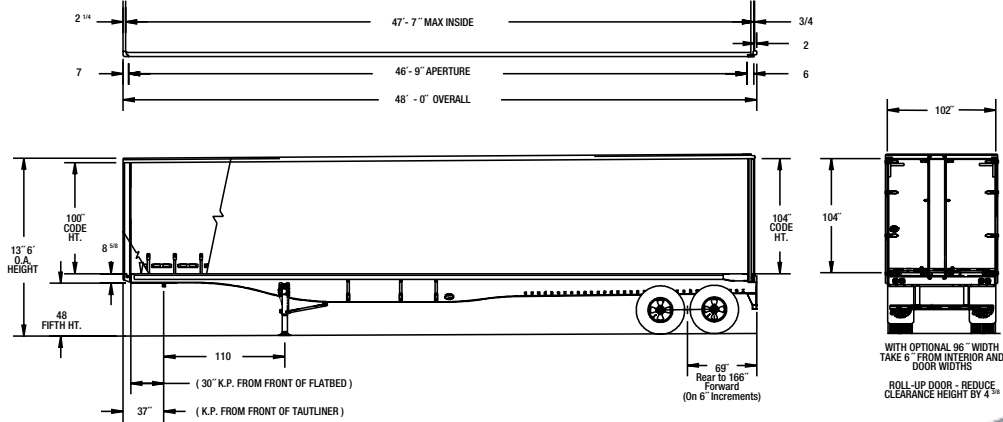


The First Name In Trailers®

Visit our website at www.utilitytrailer.com to see more features and options

* MODELS SHOWN MAY INCLUDE OPTIONAL SPECIFICATIONS. SPECIFICATIONS AND DIMENSIONS MAY VARY BY MODEL AND ARE SUBJECT TO CHANGE WITHOUT NOTICE. SEE A DEALER FOR MORE INFORMATION.

TAUTLINER® Our Standard Features Exceed Industry Standards

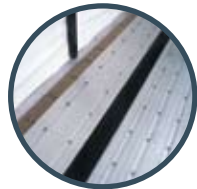


Standard Features



Curtains Built For Durability and Load Protection

Full load bearing and built with a superior 3x2 weave, Utility Tautliner® curtains are the strongest in the industry. Designed to provide superior load protection and long-lasting durability. High Utility quality means low maintenance and greater performance for greater profits.



Floors Designed for Less Weight, Greater Strength

The Tautliner 2000TA™ features an all aluminum flooring system for lighter weight and greater strength. A network of strategically located moisture-inhibiting gaskets, and "stay tight" floor fasteners keep the floor secure and tight.



Versatility for Added Profitability

The Tautliner's load versatility permits virtually any kind of back hauls, regardless of size or dimensions, and always with complete weather protection. Curtains permit full utilization of the complete width and length of the trailer for optimum load clearance, more backhaul capability, and added profitability.



Quick Deliverability — Immediate Accessibility

The Tautliner's three-way simultaneous access saves time and money. Its faster loading and unloading capabilities ensures quicker deliveries, without first-on, last-off load-planning problems.



Superstructure Provides Greater Strength With Less Weight

The Tautliner's light weight, yet heavy-duty superstructure is fabricated to the same high standards as all Utility vans. Built with aluminum top rails and bonded roof bows for superior strength with less weight. Front wall and rear doors built for maximum protection and durability as well as greater payload capacity.



Utility Tautliner 2000TA™ Adds Pounds of Payload

The Utility Tautliner 2000TA™ has been redesigned and re-engineered for a new era of greater efficiency, durability, and profitability. As much as 800 lbs. lighter than all-steel models, it increases payload while simultaneously increasing durability and lowering maintenance.



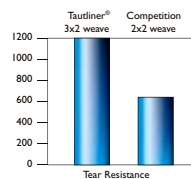
Extruded Aluminum Side Rails

The Tautliner 2000TA™ features Utility's uniquely designed extruded side rails with integrated sliding cinch track for unlimited points of load securement.



High Strength Extruded Aluminum Outriggers

For added life and lower maintenance, the 2000TA™ outriggers are engineered to distribute side rail loads to the main beams.



Quality Curtains, 50% Stronger Than Others

Made of PVC-coated polyester fabrics and featuring a 3x2 weave, Utility-designed and manufactured curtains are almost twice as strong as the standard competitors' 2x2 curtain weave. Added strength and Utility quality ensures longer curtain life.

